

**Art in State Buildings at the University of Florida  
Call to Artists - UF 461 NEXUS Engineering**

**Location:** Herbert Wertheim Laboratory for Engineering Excellence (NEXUS Engineering), University of Florida, Gainesville, FL

**Art Budget:** \$95,500 for a site-specific work of art. Up to 3 finalists will receive a \$1,500 honorarium to visit the site and create a site-specific proposal.

**Deadline for Entries:** Friday, September 21<sup>st</sup>, 2018 5:00pm

**Project Timeline:** Finalists notification target date October 2018, Finalist site visit: TBD, Site-specific proposals due 2019, Building Completion: Spring 2019

**Criteria to Apply:** Artist has met at least two (2) of the following:

- the artist has completed public commissions similar in budget
- the artist's works are in major public, private, corporate, or museum collections
- the artist has received awards, grants, or fellowships;
- the artist has had a one-person exhibition in a museum within the past five years

**Required Application Materials:**

1. Statement - (one page or less) Briefly explain your interest in this project and how submitted images may relate to this project
2. Resume - A current professional resume emphasizing above mentioned criteria
3. ID Sheet - Image Identification pages that provide for each submitted digital image or video: thumbnail image of work, title of work, medium, dimensions or length of video, date of work, price of work or amount of commission.
4. Images - no more than 20 digital images in jpg, gif, or png format. (Alternative image formats will not be accepted by the submission website. Please check your files before submitting.) The first five images submitted / correlating on the ID sheet will be seen in the initial blind review. Only artwork with sound or motion may be submitted by providing links to Vimeo or YouTube. Installation videos or video of static works will not be viewed. Each video counts as an image in the 20 allowable.

**Submissions:** online applications accepted at:

**[https://arts.ufl.edu/forms/asb-application/?project=UFASB\\_641](https://arts.ufl.edu/forms/asb-application/?project=UFASB_641)**

**Contact:** Oaklianna Caraballo (352) 240-4080 [pubart@arts.ufl.edu](mailto:pubart@arts.ufl.edu)

## **INFORMATIONAL TEXT:**

### UNIVERSITY OF FLORIDA:

Located in the heart of North Central Florida, the University of Florida (<http://ufl.edu>) is one of America's premier public Universities and is the first Florida school to break into the list of top 10 best public universities, coming in at No. 9, according to the 2018 U.S. News & World Report Best Colleges rankings. The University of Florida is one of the largest universities in the United States and students from more than 100 countries attend UF's 20 colleges and 100 interdisciplinary research and education centers and institutes.

UF has a 2,000-acre campus and more than 900 buildings, including the first Leadership in Energy and Environmental Design (LEED) Platinum- certified building in the state of Florida.

### NEXUS ENGINEERING:

With the help of a \$300 million public-private partnership, UF is transforming the heart of campus into a home and headquarters for the New Engineer. This will be our flagship building: an 84,000 square foot state-of-the-art research and educational environment. Investing in people, places, and programs, key building features include:

- Classrooms and tools to facilitate team based learning, including freshman design labs
- Faculty and student collision spaces to encourage cross-disciplinary collaboration
- State of the art Biotech Lab to engineer solutions to overcome cancer, cardiovascular and muscular disorders and neurodegenerative diseases
- Prototyping labs to enhance hands on learning and help develop big ideas
- Telepresence lab to build 21<sup>st</sup> century communication and networking skills

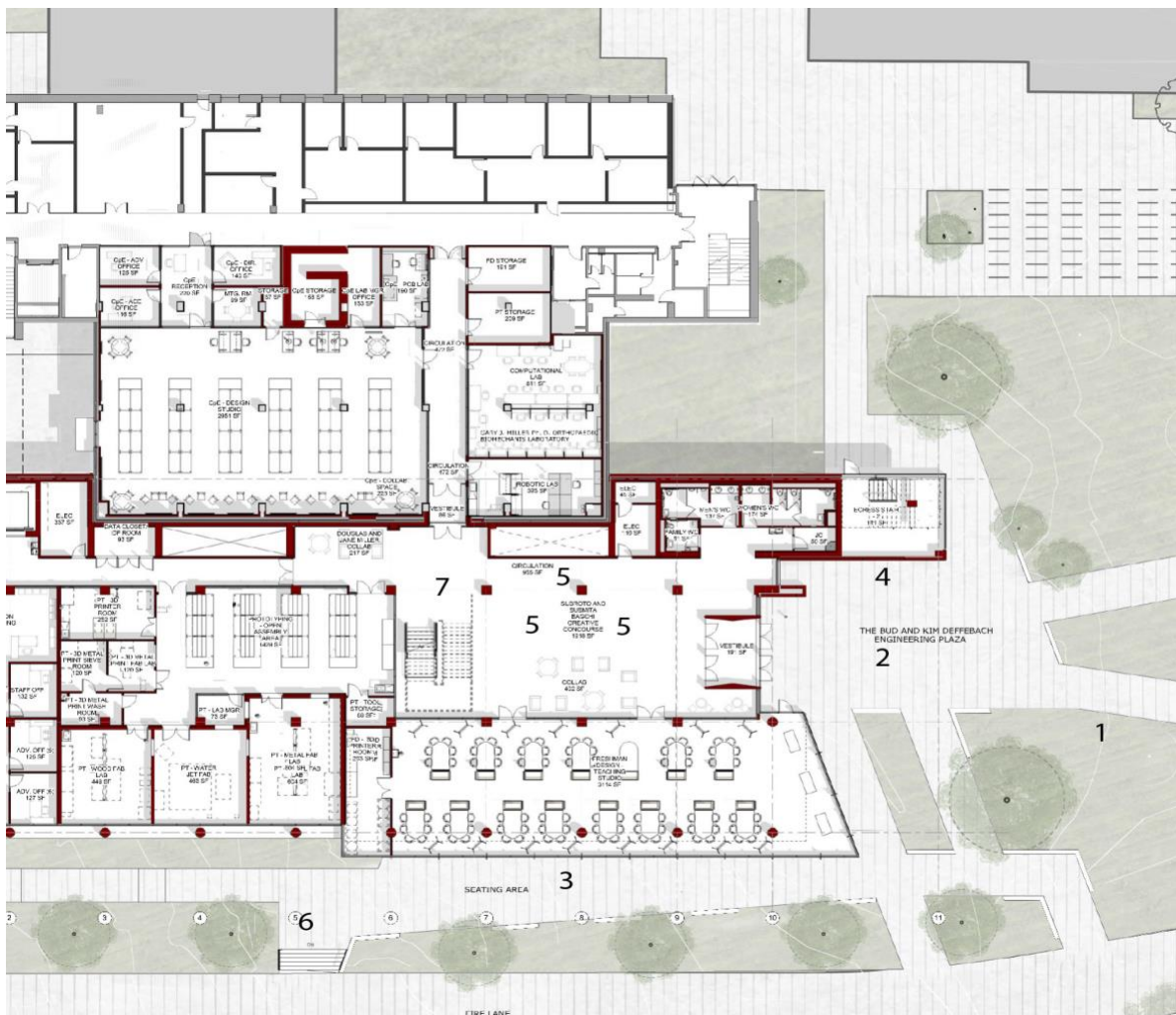
## SITES FOR ART:

Based on the idea that “Engineering is Human,” the committee likes the idea of connecting arts to humanity, community engagement, and student involvement.

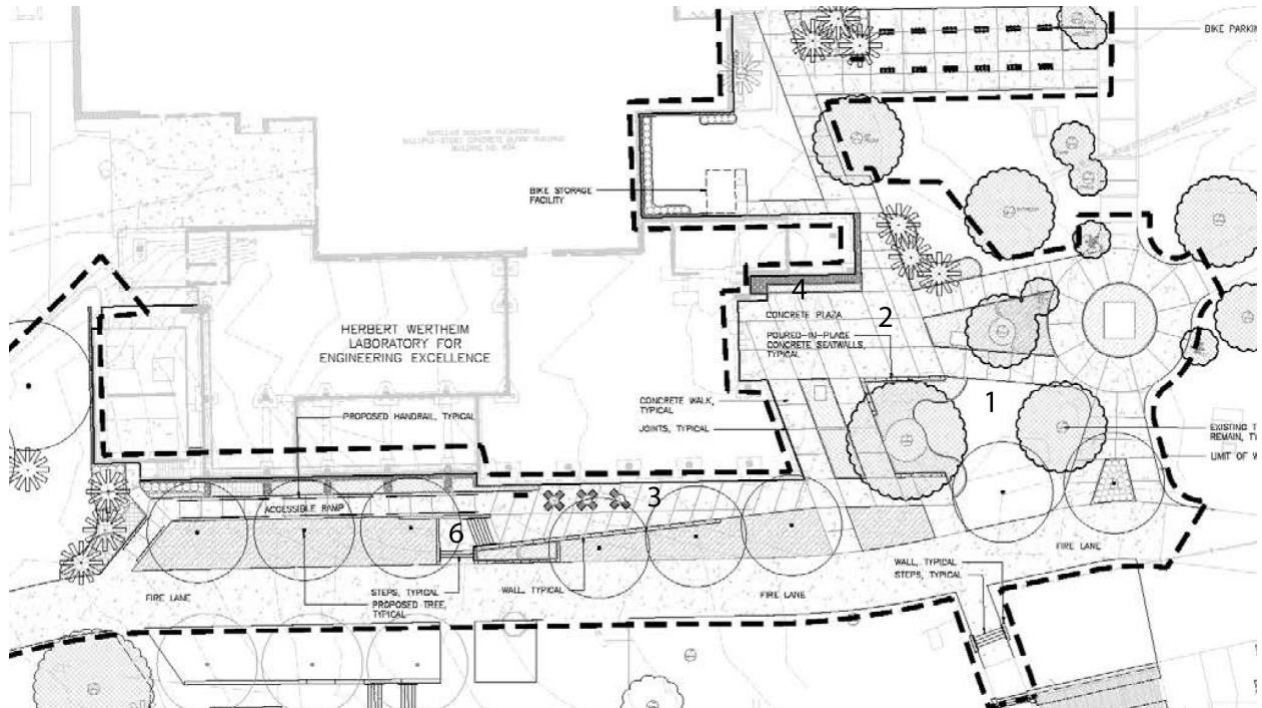
All available sites for art are listed. It is not expected that all sites will receive art for the listed budget. Finalists will receive detailed elevations and floor plans for interior and exterior sites.

1. East Lawn – next to heritage tree
2. East Entry Paved Space – heavy pedestrian and cyclist traffic
3. South Student Gathering Space – seating wall
4. North Wall of East Entry Paved Space
5. East Entry Lobby - including floor slab around atrium, suspended, and/or northwest wall
6. South Stair Exterior
7. Main Stair Interior

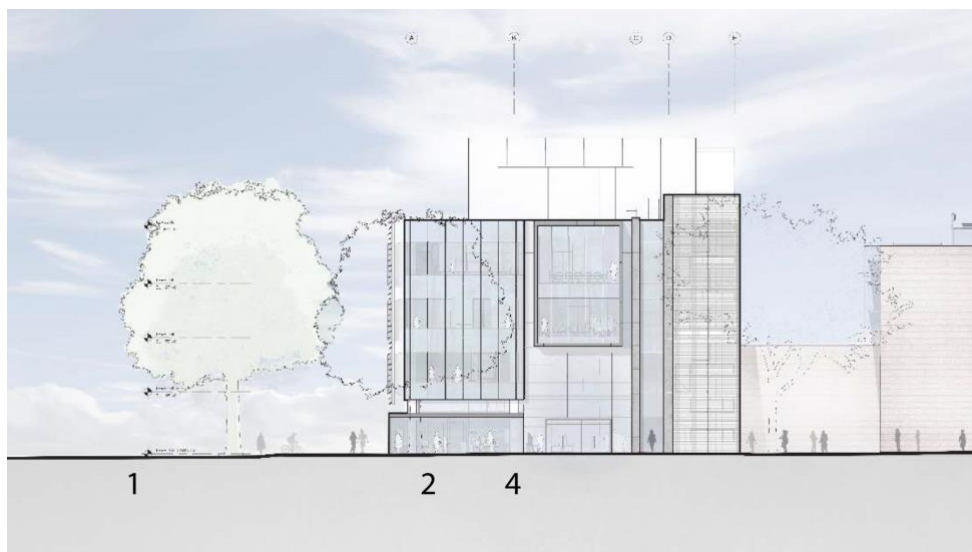
## ALL SITES:



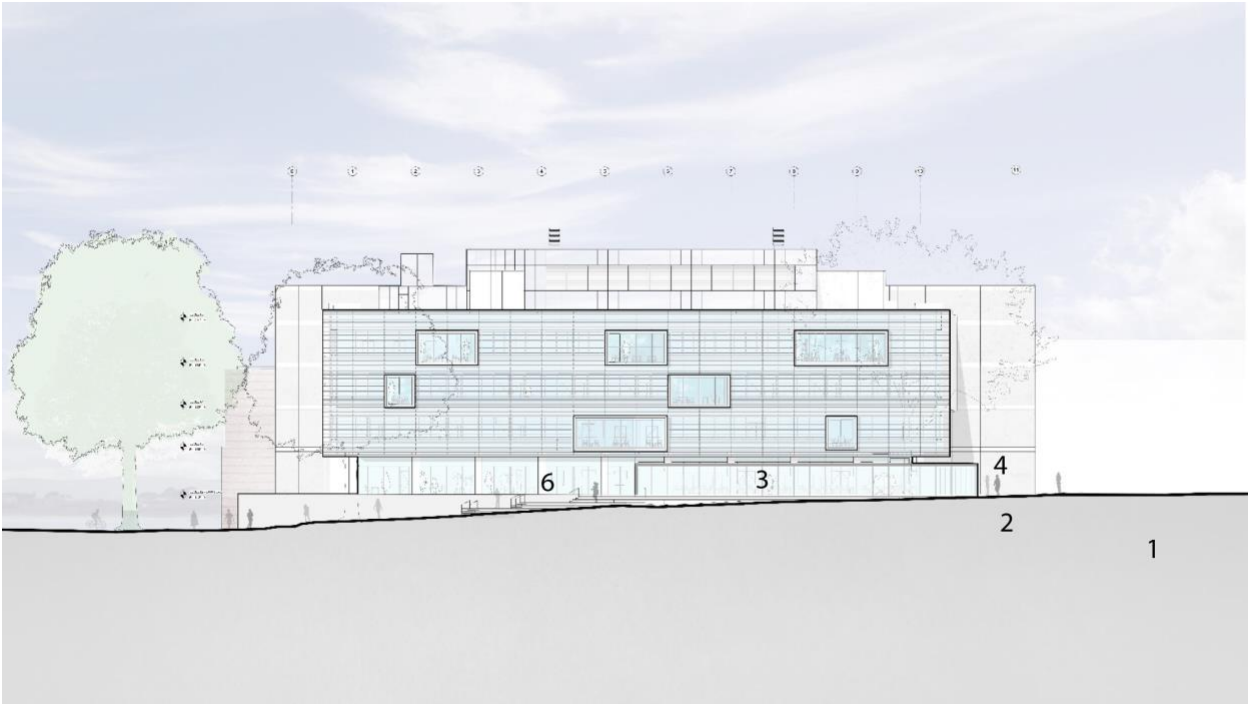
**EXTERIOR SITES WITH TREE LINES:**



**EAST ELEVATION FACING EAST ENTRY LOBBY: EAST LAWN (SITE 1), EAST ENTRY PAVED SPACE (SITE 2), AND NORTH WALL OF EAST ENTRY PAVED SPACE (SITE 4)**



SOUTH ELEVATION: EXTERIOR STAIRS (SITE 6), STUDENT GATHERING SPACE AND SEATING WALL (SITE 3)



VIEW FROM SOUTH EAST:

