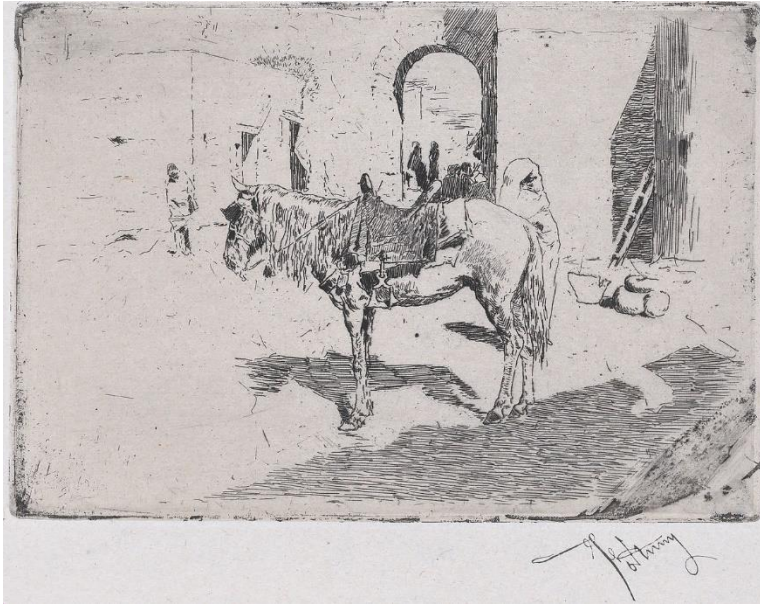


Summer B
Schedule: M&W (11:45am-2:45pm)
Classroom:FAD 101

Instructor: Vincent Granela
Contact: vgranela@ufl.edu
Office: Appointment(zoom & in-person)

ART 2353C – Drawing Studio



Course Description: Development of drawing, design, philosophical, and critical skills for making observational and expressive works in drawing media.

Learning Objectives:

- Accurately represent perceptions in 2D format
- Make informed choices in representation to promote the communication of content
- Apply knowledge of historic and contemporary sources in the development of content
- Use drawing and design skills to visually communicate abstract concepts
- Make informed choices in drawing tools and materials
- Apply a visual vocabulary of marks to achieve expressive outcomes
- Embody in critique the use of representation and translation through historic and contemporary precedents.
- Describe one's own philosophy of drawing
- Critique works based on technical, aesthetic, and philosophical considerations
- Be conversant in the embeddedness of drawing in all art practice

Summer B

Schedule: M&W (11:45am-2:45pm)

Classroom:FAD 101

Instructor: Vincent Granela

Contact: vgranela@ufl.edu

Office: Appointment(zoom & in-person)

Skill Sets:

- Develop a full range of drawing skills and vocabulary of mark-making
- Accurate perceptual drawing
- Develop thematic body of drawings
- Knowledge and application of 2D design principles
- Able to make informed choices about drawing tools and materials
- Develop critical vocabulary and research skills
- Develop understanding of the relationship between the history of art and contemporary art practice

Major Topics:

1. Elements of Drawing: line, shape, volume, value, space, texture
2. Principles of Art: balance, proportion, rhythm, emphasis, and unity
3. Drawing Practices: contemporary and historic
4. Philosophies of Drawing
5. Drawing Media: contemporary and historic
6. Critical conversation about drawing

TEXT

Course reading materials will be available on E-learning or distributed in studio. No textbook is to be purchased.

MATERIALS

Below is a list of supplies you will need to purchase as soon as possible.

Quantity, Material

1-2, 18 X 24 Strathmore Drawing Pad -white	1, Ebony Pencil
1, 18 X 24 Newsprint Pad	1, large Kneaded Eraser
2 sheets, 22 x 30" Stonehenge Paper- White	1, Tri-eraser w/refill
3 sheets, 30 X 40" Stonehenge Paper – White	1, large Artgum eraser
1, 18 X 24" Pad Tracing Paper	1, Artist Tape 1/2"
2 packs, Compressed Charcoal	1, X-acto knife and blade refill
2 packs, Vine Charcoal - Soft	1, Long Metal Ruler
1 pack, Vine Charcoal - Medium	1, Workable Spray Fixative
1 pack, Vine Charcoal – Hard	1, Pencil Sharpener
1 medium Charcoal Pencil	6, large bull clips
1 pack, Stick of Alpha Color – Whitepack,	1, Portfolio for Transporting/Storing Drawings (24x 36" or larger)
1 pack, Alpha Color Conte Crayon, Sepia	1, Box for drawing materials
1, Faber 12 Pencil Kit	
1, black china marker	
1, Watersoluble Sketch Pencil 4b	
1, Pelikan India Ink	
1, #4 Bamboo Brush	
1, medium Tortillions 5/16"	
1, Ball point pen	

Optional:

Any other drawing media you would like to experiment with in some of the open sketchbook assignments.

***Supplies may be purchased at SOMA, Michaels, or ordered online through Utrecht Art Supply or Dick Blick.**

Summer B**Schedule:** M&W (11:45am-2:45pm)**Classroom:**FAD 101**Instructor:** Vincent Granela**Contact:** vgranela@ufl.edu**Office:** Appointment(zoom & in-person)**Evaluation:**

- The completion and success of all in class and out of class exercises and drawings.
- Completion of all assigned readings and discussions
- Attendance at all assigned field trips and lectures
- Technical competence, craft, and inventive use of materials
- Presentation- all work should be presented in a finished and professional manner
- Effort, hard work, and a diligent, consistent effort toward excellence
- Active participation and discussion

Grading: Specific criteria for grading include adherence to the assignment parameters, research/studio practice, concept development, formal resolution, and craft/presentation. Late projects will not be accepted.

Project Evaluation:

A Extremely well presented exceptional work. Exceptional work demonstrates a full realization of the ideas put forth in assignment, and more. Discussing points in the work of you and your peers is expected during the critique sessions. Excellent attendance and no lateness. Enthusiasm and focus during the in-class work time; coming to class ready to work.

B Well presented very good work. Very good work demonstrates a sound and competent realization of the ideas put forth in each assignment. Participation in critique, attendance, and enthusiasm apply throughout.

C Well-presented, average work. Average work demonstrates a fairly good attempt at grasping the expectations of each given assignment, and the breakdown of the particular specifics, (material, handling, idea, etc., whatever has been discussed prior to assignment). This work lacks a competent, comprehensive understanding mentioned in 'B' above. Participation in critique, attendance, and enthusiasm are expected, as they would be in the earning of any letter grade.

D Inadequate work: Extremely poor and/or half-finished work with no care or attention to the assigned problem or presentation. In addition, when someone has missed an enormous amount of classes, (three and above) and has failed to complete assignments, or keep up to date with the studio-based syllabus.

E When someone stops coming to class and stops communicating with the instructor. This is a severe grade and is usually given in severe circumstances.

Summer B**Schedule:** M&W (11:45am-2:45pm)**Classroom:**FAD 101**Instructor:** Vincent Granela**Contact:** vgranela@ufl.edu**Office:** Appointment(zoom & in-person)**Letter Grade and Corresponding Grade Points**

A	A -	B+	B	B -	C+	C	C -	D+	D	D -	E	WF	I	NG	S-U
4.0	3.67	3.33	3.0	2.67	2.33	2.0	1.67	1.33	1.0	.67	0	0	0	0	0

Grading Scale:

- A 95-100
- A- 94-90
- B+ 89-87
- B 86-84
- B- 83-80
- C+ 79-77
- C 76-74
- C- 73-70
- D+ 69-67
- D 66-64
- D- 63-60
- E 59-0

Notes: A "C" represents satisfactory work, regular attendance, and successful accomplishment of the course. A grade of "C-" or below will not count toward major requirements.

Course Requirements and Evaluation:

75% Projects and Assignments (60% in class exercises +15% final portfolio)

Final Portfolio: Consist of 6 drawing projects + 2 favorite drawings produced over the semester

15% Sketchbook (weekly sketchbook assignments)

10% Participation (On time, ready to work with materials, studio clean up, following health and safety guidelines, and participation in critiques and class discussions)

Summer B
Schedule: M&W (11:45am-2:45pm)
Classroom:FAD 101

Instructor: Vincent Granela
Contact: vgranela@ufl.edu
Office: Appointment(zoom & in-person)

Schedule

Week 1 - Day1

Review class syllabus & class expectations: Sketch books, homework, grading and final portfolios.

Discuss topics covering course materials, presentation of work, health and safety, classroom care/cleanup, storage (lockers and portfolios)

Lecture Topic 1 – What Drawing Is: Perceptual, Conceptual, Communicative, Expressive

In-class Drawing

One thirty minute in class still-life drawing with supplied paper and pencils. Use to assess student skills and save for end of course

Week 1 – Day 2

Lecture Topic 2: Line Mass Gestures, Perceptual Screen, Perception, proportion and depth

For next class: Bring Make two black and white photocopies of the same master painting – do not print from the internet. Find a large reproduction in one of your art history textbooks, or one from the library and bring to the next class. Look for compositions by concentrating on the 2D shapes made by the figures or objects and that shapes of the spaces between.

In-class Drawing

- **Line, Mass, Mass and Line Gestures**

Week 2 – Day 1

Check sketchbooks

In-class Drawings:

- **Reclining Planes**
- **Standing Receding Planes**
- **Analyzing Negative Shapes**

Demo: Basic Proportion and Measuring

Week 2 – Day 2

Lecture Topic 3: Form: Organic Mark + Form

In-class Drawings:

- **(charcoal) Expressive Lines**
- **Natural Contour**
- **(Charcoal, graphite, ink)– portfolio Cross-Contour Tree Trunk**

***Assign sketch book homework**

Summer B

Schedule: M&W (11:45am-2:45pm)

Classroom:FAD 101

Instructor: Vincent Granela

Contact: vgranela@ufl.edu

Office: Appointment(zoom & in-person)

Week 3 Day 1

Check sketchbook

Cross Contour Tree Trunk critique

Lecture Topic 4: Form: Geometric Mark + Form

In class drawings:

- **Finding Geometry in Natural Objects**

Week 3 Day- 2

In class Drawing:

- **Diagonal Energy (ebony pencil or charcoal on newsprint)**

***Assign sketch book homework**

Week 4 Day – 1

Check Sketch Books

Lecture Topic 5: Space

Demo: Measuring with pencil and L ruler on newsprint

In class Drawings:

- **Exploring Space through Surface**

Week 4 Day – 2

In class Drawings:

- **Vanishing Point, Still Life**

***Assign sketch book homework**

Week 5 Day – 1

Check sketchbooks

In class drawings:

- **Exaggerated Perspective (China marker or Ebony pencil)**

Week 5 Day – 2

Continue in class drawing

- **Exaggerated Perspective (China marker or Ebony pencil)**

***Assign sketch book homework**

Summer B
Schedule: M&W (11:45am-2:45pm)
Classroom:FAD 101

Instructor: Vincent Granela
Contact: vgranela@ufl.edu
Office: Appointment(zoom & in-person)

Week 6 Day - 1

Check Sketchbook

In class Drawing

- **Perspective Textures**

Week 6 Day – 2

In Class Drawing continued

- **Perspective Textures**

***Assign sketch book homework**

Week 7 Day – 1

Check sketchbooks

Critique

Week 7 Day-2

Lecture Topic 6

In class Drawing:

- **Textures in Natural Objects**

***Assign sketch book homework**

Week 8 Day-1

Check Sketchbooks

In class drawing:

- **Atmospheric Perspective to create space**

Week8 Day – 2

In Class drawing:

- **Abstract Shapes in Merging Lights and Shadows**

***Assign sketch book homework**

Week 9 Day – 1

Check Sketchbooks

Lecture Topic 7- Value: idea and Response

In class drawing:

- **Experimenting with Value Proportions**

Summer B

Schedule: M&W (11:45am-2:45pm)

Classroom:FAD 101

Instructor: Vincent Granela

Contact: vgranela@ufl.edu

Office: Appointment(zoom & in-person)

Week 9 Day – 2

In class drawing:

- **Illuminated full figure, Self portrait**

***Assign sketch book homework**

Week 10 Day – 1

Check sketchbook

In progress Critique and continue Illuminated Figure drawing

Week10 Day – 2

Critique select best of:

- **Illuminated figure**
- **Atmospheric Perspective to create space**
- **Abstract Shapes in Merging lights and shadows**

***Assign sketch book homework**

Week 11 Day – 1

Check sketchbook

Lecture Topic 8 – Composition and Expression

In class drawing:

- **Compositional proportion and meaning**

Week 11 Day – 2

In class drawing:

- **Dynamic Tension: The Jungle- in situ pond by FAA**

Introduce next project

***Assign sketchbook homework**

Week 12 Day – 1

Check sketchbooks

In class drawing:

- **Frottage and Imprint**

Week 12 Day – 1

Continue In class drawing:

- **Frottage and Imprint**

Assign Sketchbook homework

Summer B

Schedule: M&W (11:45am-2:45pm)

Classroom:FAD 101

Instructor: Vincent Granela

Contact: vgranela@ufl.edu

Office: Appointment(zoom & in-person)

Week13 Day – 1

Check Sketchbooks

In class drawing:

- **Sequence and Hierarchy**

Week 13 Day – 2

Continue in class drawing:

- **Sequence and Hierarchy**

Week 14

SERIES PROJECT

Week 15

SKETCH BOOKS DUE

Continue SERIES PROJECT

Week 16 Day – 1

FINAL CRITIQUE

Portfolio due

Sketch book due

Submit on canvas

Finals Week

Studio Clean up

Summer B
Schedule: M&W (11:45am-2:45pm)
Classroom:FAD 101

Instructor: Vincent Granela
Contact: vgranela@ufl.edu
Office: Appointment(zoom & in-person)

Course Policies

Attendance:

Attendance and active participation are required. Students are expected to attend all classes. You are required to work/participate for the duration of the scheduled class period.

Unexcused absences will be cause for a lower grade. Your fourth absence will result in ONE full letter grade drop. Absences will be counted from the first class meeting onward. University Policy <https://catalog.ufl.edu/UGRD/academic-regulations/attendance-policies/>

If an absence occurs, it is the student's responsibility to make up all work.

Students should check with the instructor or another student outside of class time when they miss a class (prior to missing the class if possible). Students should bring a doctor's note for any class from which they expect to be excused.

Tardiness: Arrival to class after start of class will be noted and **THREE** such incidences will be counted as **ONE** absence. Leaving early from class will also be considered as tardiness and will be counted as such.

Late Work: All projects, reading responses, and research projects must be completed on time for full credit. It is the student's responsibility to turn in all work on time.

Class Communication: Students must check their school emails regularly and the E-learning course site. Students are responsible for any information, deadlines, and updates emailed to their UF email accounts.

***Cell Phones:** Keep on silent.

Summer B**Schedule:** M&W (11:45am-2:45pm)**Classroom:**FAD 101**Instructor:** Vincent Granela**Contact:** vgranela@ufl.edu**Office:** Appointment(zoom & in-person)**Hazardous Waste Satellite Accumulation:**

Read the SAAH Health and Safety program at: <https://arts.ufl.edu/academics/art-and-art-history/health-safety/> during the first week of class. Refer especially to the H&S rules by area sections pertaining to Drawing. Each Student will be asked to complete a H&S student waiver form.

SA+AH facilities have an area designated for art materials/hazardous waste pickup. This area should NOT be used for art making. Bins and storage containers in this area should NEVER be moved for any other purpose.

Locker/ Storage:

SA+AH is not responsible for items in lockers. Each student must share a locker with two students. You are responsible for keeping the locker form attached AT ALL TIMES. Lockers will be cleaned out at the end of each semester. When storing your materials, write your name on everything. SA+AH is not responsible for items left in the classrooms.

Studio Use:

Please read and respect studio use guidelines posted in classrooms. Do NOT pour solvents down sinks. Fixative must be sprayed in the FAC second floor spray booth. Each student is responsible for assisting in studio clean up.

Shared Studio:

Leave the studio clean, regardless of the condition you find it in. Place all work in progress on the storage shelves. This is a shared studio space, work together to keep it clean.

Summer B

Schedule: M&W (11:45am-2:45pm)

Classroom:FAD 101

Instructor: Vincent Granela

Contact: vgranela@ufl.edu

Office: Appointment(zoom & in-person)

*****IMPORTANT COVID-19 Classroom Policies: *****

- Due to the surge in Covid-19 cases because of the Delta Variant ALL people, inside UF facilities are expected to wear approved face masks even if vaccinated. Uf also urges all people to get vaccinated <https://coronavirus.ufhealth.org/vaccinations/> Recent research and guidance from the CDC state that both unvaccinated and vaccinated individuals can transmit the current Covid-19 variant to unvaccinated persons.
- Maintain physical distancing (6 feet between individuals). Please utilize designated seats and maintain appropriate spacing between students. Please do not move desks or stations.
- Sanitizing supplies are available in the classroom if you wish to wipe down your desks/easels prior to sitting down and at the end of the class.
- Follow your instructor's guidance on how to enter and exit the classroom. Practice physical distancing to the best extent possible when entering and exiting the classroom.
- **If you are experiencing COVID-19 symptoms** (<https://www.cdc.gov/coronavirus/2019-ncov/symptoms-testing/symptoms.html>) please use the UF Health screening system and follow the instructions on whether you are able to attend class. (<https://coronavirus.ufhealth.org/screen-test-protect-2/frequently-asked-questions/covid-19-exposure-and-symptoms-who-do-i-call-if/>) Course materials will be provided to you with an excused absence, and you will be given a reasonable amount of time to make up work.

UF POLICY FOR IN-CLASS RECORDING

Students are allowed to record video or audio of class lectures. However, the purposes for which these recordings may be used are strictly controlled. The only allowable purposes are (1) for personal educational use, (2) in connection with a complaint to the university, or (3) as evidence in, or in preparation for, a criminal or civil proceeding. All other purposes are prohibited. Specifically, students may not publish recorded lectures without the written consent of the instructor.

A "class lecture" is an educational presentation intended to inform or teach enrolled students about a particular subject, including any instructor-led discussions that form part of the presentation, and delivered by any instructor hired or appointed by the University, or by a guest instructor, as part of a University of Florida course. A class lecture does not include lab sessions, student presentations, clinical presentations such as patient history, academic exercises involving solely student participation, assessments (quizzes, tests, exams), field trips, private conversations between students in the class or between a student and the faculty or lecturer during a class session.

Publication without permission of the instructor is prohibited. To "publish" means to share, transmit, circulate, distribute, or provide access to a recording, regardless of format or medium, to another person (or persons), including but not limited to another student within the same class section. Additionally, a recording, or transcript of a recording, is considered published if it is posted on or uploaded to, in whole or in part, any media platform, including but not limited to social media, book, magazine, newspaper, leaflet, or third-party note/tutoring services. A student who publishes a recording without written consent may be subject to a civil cause of action instituted by a person injured by the publication and/or discipline under UF Regulation 4.040 Student Honor Code and Student Conduct Code.

Summer B

Schedule: M&W (11:45am-2:45pm)

Classroom:FAD 101

Instructor: Vincent Granela

Contact: vgranela@ufl.edu

Office: Appointment(zoom & in-person)

UNIVERSITY POLICY FOR RELIGIOUS HOLIDAYS Students, upon prior notification of their instructors, shall be excused from class or other scheduled academic activity to observe a religious holy day of their faith. Read the full policy here:

<https://catalog.ufl.edu/UGRD/academic-regulations/attendance-policies/#religiousholidaystext>

ACCOMMODATIONS FOR STUDENTS WITH DISABILITIES Students requesting classroom accommodation must first register with the Dean of Students Office. The Dean of Students Office will provide documentation to the student who must then provide this documentation to the instructor when requesting accommodation. Disability Office <https://disability.ufl.edu/>

UNIVERSITY ILLNESS POLICY Students who are absent from classes or examinations because of illness should contact their professors. If you're unable to attend class due to illness, please email the teacher prior to class meeting time. Please state your name, class, as well as the reason you will not be attending class that day.

UNIVERSITY COUNSELING SERVICES: 352-392-1575 <http://www.counsel.ufl.edu/> Resources are available on campus for students having personal problems or lacking clear career and academic goals which interfere with their academic performance. The Counseling Center provides counseling and consultation services to currently enrolled undergraduate and graduate students and their spouses/partners. The Center offers brief counseling and therapy to help students confront personal, academic, and career concerns. The primary goal of counseling is to help students develop the personal awareness and skills necessary to overcome problems and to grow and develop in ways that will allow them to take advantage of the educational opportunities at the university. Counseling Center Web site:

<https://umatter.ufl.edu/office/counseling-wellness-center>

STUDENT HEALTHCARE CENTER <http://shcc.ufl.edu/> For medical emergencies call 911. For urgent after-hours care, call 352-392-1161. For after-hours mental health assistance, call 352-392-1171. **SAFETY AND SECURITY** In an emergency call 911. University Police Department: <http://police.ufl.edu/> 352-392-1111.

Summer B**Schedule:** M&W (11:45am-2:45pm)**Classroom:**FAD 101**Instructor:** Vincent Granela**Contact:** vgranela@ufl.edu**Office:** Appointment(zoom & in-person)

STUDENT NIGHTTIME AUXILIARY PATROL (SNAP) SNAP provides nightly escorts anywhere on campus to persons on request. The service is staffed by students, equipped and supervised by the university police department. Escorts are routed on foot and driven trips. **Contact SNAP via telephone at 392-SNAP (92-7627)** provide first name, location of pick-up and destination to the dispatcher who determines the best method of meeting the requester's need. A walking or driving escort is dispatched to their location.

UF PHILOSOPHY The University of Florida is an institution that encourages the intellectual and personal growth of its students as scholars and citizens. As an educational institution, the University recognizes that the transmission of knowledge, the pursuit of truth, and the development of individuals require the free exchange of ideas, self-expression, and the challenging of beliefs and customs. In order to maintain an environment where these goals can be achieved safely and equitably, the University promotes civility, respect and integrity among all members of the community. As stated in the Standard of Ethical Conduct, students are expected to exhibit high standards of behavior and concern for others.

ACADEMIC HONESTY As a result of completing the registration form at the University of Florida, every student has signed the following statement: " I understand that the University of Florida expects its students to be honest in all of their academic endeavors and understand that my failure to comply with this commitment may result in disciplinary action to and including expulsion from the University. <https://sccr.dso.ufl.edu/policies/student-honor-code-student-conduct-code/>

DISRUPTIVE BEHAVIOR Faculty, Students, Administrative and Professional staff members, and other employees [hereinafter referred to as "member(s)" of the University], who intentionally act to impair, interfere with, or obstruct the mission, purposes, order, operations, processes, and functions of the University shall be subject to appropriate disciplinary action by University authorities for misconduct, as set forth in the applicable rules of the Board of Regents and the University and state law governing such actions. A detailed list of disruptive conduct may be found at <http://www.aa.ufl.edu/aa/Rules/1008.htm> . Be advised that you can and will be dismissed from class if you engage in disruptive behavior.

Course Evaluation Students are expected to provide professional and respectful feedback on the quality of instruction in this course by completing course evaluations online via GatorEvals. Guidance on how to give feedback in a professional and respectful manner is available at <https://gatorevals.aa.ufl.edu/students/>. Students will be notified when the evaluation period opens, and can complete evaluations through the email they receive from GatorEvals, in their Canvas course menu under GatorEvals, or via <https://ufl.bluera.com/ufl> . Summaries of course evaluation results are available to students at <https://gatorevals.aa.ufl.edu/public-results/> .