

## **Syllabus**

### **ART 4760 Advanced Ceramics Spring 2019 6 Credits FAC B16**

#### **Visiting Assistant Professor: David Bogus**

Class Hours M/W 8:30am - 11:30am

Office: FAC B15 Office

Office Hours: MW 2 – 3 PM

and by appointment

Email: [davidbogus@ufl.edu](mailto:davidbogus@ufl.edu)

Phone: 352-273-3083

WEBSITE: [www.davidbogus.com](http://www.davidbogus.com)

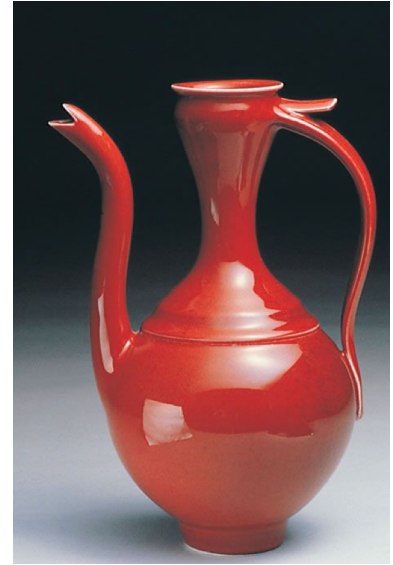
#### **Graduate Teaching Assistant: Aimee Marcinko**

Class Hours: Friday 8:30 AM – 2:30 PM

Office hours: TBA

Email: [aimeemarcinko@ufl.edu](mailto:aimeemarcinko@ufl.edu)

Studio: B10



*PETER PINNELL*

**Canvas** e-learning will be used for this class for calendar, announcements, email and course materials and some assignments. You are responsible to check this site before & after each class in preparation for homework and follow up. <https://lss.at.ufl.edu/>

*Welcome to UF Ceramics* is an important part of this syllabus can be found on **Canvas** under Files. These materials will be covered the first day of class.

**Introductions:** Name preferences and preferred pro-nouns will be respected in this class, and all area asked to be patient with the occasional error.

<https://lgbtq.vassar.edu/transandnon-binaryresources/gender-pronouns.html>

[https://www.youtube.com/watch?v=Fb\\_We13\\_QTA](https://www.youtube.com/watch?v=Fb_We13_QTA)

**Texts:** There are no specific texts for this course and only a few on reserve in the Fine Art and Architecture Library. The expectation is that you will do the necessary research and find the appropriate texts, articles, DVD's and website based on your research direction.

#### **Resources:**

- [Understanding glazes: how to test, tweak, & perfect your glazes](#), DVD with John Britt
- [3D Printing for Artists, Designers and Makers: Technology Crossing Art and Industry](#), Steven Hoskins
- [Developing Glazes](#), Greg Daly
- [The Ceramic Spectrum](#), 2<sup>nd</sup> Edition, Robin Hopper (FOR GLAZE TECH)
- [Mastering the Potter's Wheel](#), Ben Carter
- [Ceramic Sculpture: Inspiring Techniques](#), Anderson Turner
- [The Back of the Napkin \(Expanded Edition\): Solving Problems and Selling Ideas with Pictures \[Hardcover\]](#), author Dan Roam
- [Thinkertoys: A Handbook of Creative-Thinking Techniques \(2nd Edition\) \[Paperback\]](#), author Michael Michalko
- [Problem Solving 101: A Simple Book for Smart People \[Hardcover\]](#), author Ken Watanabe
- [The Art of Innovation: Lessons in Creativity from IDEO, America's Leading Design Firm \[Hardcover\]](#)
- Tom Kelley (Author), Jonathan Littman (Author), Tom Peters (Foreword)

#### **Suggested Professional practice books:**

- "The Practical Handbook for the Emerging Artist" Second Edition, author Margaret R. Lazzari, Wadsworth Thompson Learning Inc., 2002, ISBN: 0-15-506202-6.(required).
- "Stayin' Alive; Survival Tactics for the Visual Artist", author Robin Hopper, Krause Publications, 2003, ISBN: 0873495713. This book is available through Axner Pottery, Oviedo, Florida (1-800-843-7057 or on-line.
- (3) Field Guide for Ceramic Artisans website – [juliagalloway.com/field-guide](http://juliagalloway.com/field-guide)

## Course Description:

This class will prepare you for self-directed advanced studio work beyond undergraduate classes. This experience will help to inform a senior project, a personal studio career, a residency, or continued education in ceramics. Students are required to develop personal ideas and technical development to support the production of individual and unique art works. Course work supports the development of a body of work to be used as a professional portfolio. Four approved studio projects are required. Students are required to develop a body of work within the context of the projects to express personal voice. Individual projects, learning patterns, problem solving, goal setting, and challenging yourself with something uncomfortable should become a part of your practice. Students are responsible for selecting and acquiring or mixing their own clay and glazes. Students are expected to load, program, and fire their work in single or shared kilns

The class will explore art ideas through research, visual presentation, and group critiques. Practical professional skills relating to presentations will be required. Alternative and possible professional directions within the art discipline will be discussed. Demonstrations, tutorials, and selective research will be conducted. It is each individual student's responsibility to define, address, and communicate with the instructor specialized areas of study during the course of the semester.

## Course Assignments:

1. Semester Long Research Topic: Each student will identify a research concept during the first week of class. This concept needs to be integrated in studio work that will include various formats. We will work closely together to define and refine the problem, identify personal content issues within the topic, solve technical problems. You are required to keep a sketchbook and do library and web research.
2. Three Presentations: Each student will be required to give three forms of presentations throughout the semester. One presentation will be the group exhibition, opening on April 5<sup>th</sup> 2019. The next presentation will be a teaching presentation where each student will be required to give a teaching lesson on a technique, material investigation, or lead a seminar on a reading. Finally, students will give a seven-minute slide lecture describing their work

Students are expected to participate in critiques that analyze your own work and presentations and that of other artists and class participants to identify strengths and weaknesses in research and promote the growth and exchange of ideas. Constructive comments can sometimes seem negative and subjective but will be helpful for future reactions to artwork outside of school. As an artist one must be able to process these comments without taking them personally and emotionally.



*Archie Bray, Helena MT  
Potters Shrine  
Robert Harrison*

**Artistic Goals:** Students will develop a basis for researching and evaluating the options in solving studio problems working in series to achieve growth in studio work. Organization and time management will be important in order to generate a project and complete it by a specified date, i.e. senior show, grad school application, etc. Along with that, a understanding the personal, technical, and aesthetic demands of working as an artist finishing the semester with a body of related works that demonstrate personal direction and evolution of idea and concepts.

## Class Format:

**Mondays** - Individual Studio Project Meetings – to discuss individual library research, ideas, aesthetic, and technical development, problem solving, coupled with individual studio in progress tutorials.

**Wednesdays** –Demonstrations, presentations, group critiques, and class discussions will take place on Wednesdays. If you are presenting be sure to have prepared when you allotted time comes.

**Fridays:** Graduate Teaching Assistant **Aimee Marcinko** will monitor Friday class sessions and will be available to give help, opinions, one on one demos and guidance. She will take attendance and keep a record of the work completed. We all learn from each other, and your participation is essential to that happening. The GTA will take roll at 8:30 am. He/she will also keep track library leaves and lunch break time. Occasionally videos, field trips or group activities will be planned for Fridays.

You will be treated as a professional artist in class. In turn, you need to act like one. Deadlines are not negotiable when it comes to grants or juried shows, and so not for this class. You need to be organized and ready for whatever the class may expect of you. Use your class time wisely, taking advantage of instructors and peers being there. Also, use your outside of class studio time wisely. Keep in mind that successful artists make more than one of anything. So if the assignment suggests four you should make at least six. Then you can choose the work to hand in, not settle for it. Ceramics has technical issues and this can help in that way as well - two out four might crack. Overall, you attitude needs to be positive, you need to work hard and be willing to share your knowledge to excel in this class.

**Grading:** All projects must be completed on time to receive full credit. Specific due dates are stated on the class calendar posted on CANVAS. Failure to complete any project on time will result in a drop of one full letter grade. Keep in mind, however, late work is better than no work.

50%	Research Project Contract completion/ with mid-term progress grade
10%	Professional practices
10%	Materials and Glazes technology and experimentation
10%	Presentations
20%	Class Participation in group critiques, kiln firings, studio upkeep, attitude, etc. Attendance
100%	Total

## UF Grading scale and policies

Please keep in mind that an excellent student attends class regularly, is on time, keeps the course work schedule, and participates fully and produces superior artwork.

A = excellent, distinguished use of concepts, materials, and execution

B = good use of concepts, materials, execution

C = average

D = marginal

F = unacceptable, failure. No credit.

<b>A+</b>	100%- 97	<b>B+</b>	89%- 87	<b>C+</b>	79%- 77	<b>D+</b>	69%- 67	<b>F</b>	0
<b>A</b>	96-94	<b>B</b>	86-84	<b>C</b>	76-74	<b>D</b>	66-64		
<b>A-</b>	93-90	<b>B-</b>	83-80	<b>C-</b>	73-70	<b>D-</b>	63-60		

UF online information about undergraduate grading:

<http://www.registrar.ufl.edu/catalog/policies/regulationgrades.html>

## Method of Evaluation

Your work will be primarily evaluated based on your Research Topic focusing on:

- craftsmanship/execution
- design/individuality
- concept/expression
- technical difficulty
- research and planning



*ROBERTO LUGO*

**It is your responsibility to manage the controlled drying of each project to meet set class deadlines for bisque and glaze kilns.** Please finish building all wet work on time for leather-hard due dates and manage the careful drying of your work so that you can meet all deadlines including firings. Clay requires your regular attention to achieve good results. It cannot be rushed or neglected.

You will be responsible for firing your own kilns, but group firings are encouraged. We work on a sustainable studio so partially filled kilns are frowned upon. I recommend you join the UF Kiln Community FB page <https://www.facebook.com/groups/588373484617966/?fref=ts> and reach out to your colleagues to fill up your kiln. Kiln sign up, maintenance etc. will be covered by the Teaching Lab Specialist. Check with Derek if you have any questions.

You must have the piece completed (leather hard if a process critique is scheduled, glazed if a finished work critique) before the start of class on critique days or your work will not be critiqued and your project grade will be lowered. Full participation by showing work during all critiques is required along with active participation through shared ideas and commentary.

### Calendar:

The class calendar will be kept on Canvas. Please plan to check on this at least 2 times a week. Much of the demos and lectures will be determined based on a Survey of Skills and Research Concepts after the first week of class. Please note important dates:

Research Concepts Due	January 9th
Visiting Artist	March 12-14
Mid-term evaluation	Week 8 or 9 TBA
Show Opening	April 5 <sup>th</sup>
Last day wet clay	April 15th
Final Critiques	April 24 <sup>th</sup>

**Attendance Policy:** Attendance (sign in sheet) will be taken at the beginning of each class; tardiness will be noted and will affect your grade.

This is not a class you can get notes from your classmates – you need to be in class and participating to learn. It is expected that you will attend regularly and be on time. Group demonstrations and lectures, individual tutorials, and discussions will be scheduled for many class periods. At other times you will be expected to be working in your area.

**Please be on time for class. Plan to arrive no later than 8:30am** and immediately prepare to start working. Arriving late disturbs class. I make important announcements at the start of class. Plan ahead for traffic, parking, etc. so you will not have problems getting to class on time.

I allow up to two absences with Friday's session counting for 2 of these absences without penalty. I do not need an excuse for these absences. Keep in mind you must meet the requirements for any class missed, the work missed and any assignments due. A third absence (particularly for a Friday) will lower your participation grade a plus or minus, and any absence following will do the same. Should you have a prolonged illness or problem that takes you out of the class more than the above, see me as soon as possible to discuss.

*The university recognizes the right of the individual professor to make attendance mandatory. After due warning, professors may prohibit further attendance and subsequently assign a failing grade for excessive absences. Students are responsible for satisfying all academic objectives as defined by the instructor. Students who do not attend at least one of the first two class meetings of a course or laboratory in which they are registered, and who have not contacted the department to indicate their intent, may be dropped from the course.*

A semester **grade of incomplete** will not be given for late work unless the following requirements are met:

1. Students must have completed the major portion of the class with a passing grade of C or better.
2. The student is unable to complete course requirements because of documented circumstances beyond his or her control.
3. The student and instructor have discussed the situation prior to the final critique (except under emergency conditions).
4. The student will fill out the College of Fine Arts incomplete grade contract, which will be signed by the instructor and the chair and will detail the work to be completed and the date by which this must be done.

**Policy for make-up of broken work:** While all due care is exercised when moving, loading, and unloading work, ceramic work is fragile. Studio accidents or kiln issues may cause work to break. Instructors must have finished work to assign a grade for a project. Work that blows up or is broken before completion will require re-making for grading. If your work is destroyed in process, please show it to me and we will discuss what must be done to achieve a finished project for grading. In the case of projects where the loss is not the student's fault (someone bumps your work), project adjustments may be negotiated and due dates adjusted.

**Clay and Glaze Materials:** The clays we are using in this course can be purchased through SA+AH Office. Clay is \$15.50 per 25 lb bag, \$31.00 for Helios. Glaze materials including, slips, wax resist, stains, patinas and pyrometric costs are already covered by the course materials fee and already paid. Other materials such as plaster and glaze materials are sold separately and can be purchased by the pound through the also through the SA+AH Office, using the same form as the clay form. Be sure to fill out the form/slip needed to bring with you to pay.

I will mark receipts and collect slips/forms during the second-class meeting and dispense clay to you. Additional clay will be available during class and can be picked up through our available grads (note hours on their studio doors, and Teaching Lab Specialist, Derek Reeverts, during scheduled hours posted on his office door. Please arrange to pick up your clay during these hours. It is suggested that you keep any additional clay locked in your locker and that you recycle your used clay for future use. We have 3 pug mills for that purpose.

#### **The Basics:**

- Bound sketchbook, recommended size no smaller than 8 x 5" but a size easy for you to carry around and use.
- Drawing supplies, i.e. pencils, ruler, compass, eraser.
- You may consider Instagram or Pinterest to collect images that might be of influence for your work. These options are not a substitute for your sketchbook and maquettes.
- By now you should have a good set of tools and brushes. Not having the proper tool available is no excuse for not having work done when required.

#### **Collect and bring in these items from home:**

- plastic cups for glaze testing (tub to hold 20+ of them)
- permanent marker
- light plastic (cleaners plastic)
- misting bottle
- small bucket
- fabric (uncoated canvas or cotton polyester blend, or muslin) optional
- small containers with lid
- apron or old clothes
- Blow dryer (optional)
- Towels - save trees! Paper towels are not supplied

**Lockers:** Please sign up for a locker to be used to store tools and personal belongings. Lockers must be cleaned out and locks removed by the end of finals week, or the contents will be considered abandoned. If you are returning please note this on the door of the locker and your belongings will not be disturbed.

**Studio space:** You will be assigned a studio space by lottery, which will be your personal space and your responsibility. Ignoring any of the rules related to the space and maintaining a safe and clean working environment, are grounds to lose this privilege. You will also be assigned some shelf space. Should there be a class going on, when the door is closed you do not have access (please check the class schedule on the door). If it is open, ask the instructor (without interrupting class) if you can work during the class time.

**Studio, storage and clean up:**

**Please leave the studio clean.** Regardless of the condition you find it in, you are requested to leave it clean for the next person. Leave the worktables and wheels clear and clean. **This is a group studio, and we all need to pitch in to keep it a safe and healthy functioning work environment.**

Each student is responsible for ensuring that his/her projects and materials are safely stored, displayed, installed, and removed from the classroom and critique space. Projects must be set up and removed from the critique space at the times and spaces designated for each project. Please be sure to sign up ahead in the binder on the door. Please note that class critiques will have priority.

The instructors, the School of Art and Art History, and the Ceramics Department are not responsible for student work left in workspaces, installation spaces, the critique space, the shops, or the classrooms. Projects/materials are not to be stored in the group working space.

Please address any concerns, problems, and questions regarding this class to me as they arise. I am available during office hours, and by making an appointment for a special meeting time.

**Door codes and access to Studios:** Door codes will be given to you during the first class.

FAC is opened:

M-F 7:00am -10:00pm

SAT 1:00pm – 10:00pm

SUN 2:00pm – 10:00pm

You will need your Gator One ID Card for the Card swipe for all other times (The card swipe is on the ground floor out to the parking lot, closest to Sculpture) or come through the ceramics kiln room door with the studio code.

DO NOT SHARE THE CODE WITH ANYONE. Abuse of the code could limit your access to the studio.

**Visitor Policy**

Laboratory and studio spaces in the School of Art and Art History are for educational and research purposes. Use of these spaces is intended for currently enrolled students, faculty and staff only. Occasionally, access may be granted to non-enrolled students, faculty or staff on a case by case situation. Permission is granted through the use of this form you can request from Teaching Lab specialist.

Laboratories and studios are managed and maintained by each SA+AH Area, therefore permission is granted by Teaching Lab Specialist for that lab/studio. If granted permission, all persons using an SA+AH lab/studio must adhere to the policies, procedures and safety measures established in the SA+AH Health and Safety Handbook ([www.arts.ufl.edu/art/healthandsafety.com](http://www.arts.ufl.edu/art/healthandsafety.com)) as well any further instructions given by area Teaching Lab Specialists. Access may be revoked at the discretion of the Area Head, Teaching Lab Specialist, or SA+AH Director, at any time, for any reason, particularly for failure to adhere to verbal or written instructions.

The SA+AH maintains laboratories and studios in art+ technology, ceramics, creative photography, drawing, graphic design, painting, printmaking and sculpture. Access to one lab or studio does not grant access to any other facility within the SA+AH.

**Earphone/Headphone use:** Use your headphones or ear buds judiciously and with common sense. Do not use listening devices at times where classroom discussions, interactions, kiln loadings or any other times when it is imperative to communicate with classmates and instructors. Do not let your use of these devices become a distraction for others or students may be asked to discontinue use of these.

## **Health and Safety:**

Appendix G: Health & Safety Area Specific Information: Ceramics, found at this link:  
<http://arts.ufl.edu/site/assets/files/37319/saahhealthandsafetyhandbook.pdf>

**PLEASE NOTE: There will be an orientation on Safety the first day of class by our Teaching Lab Specialist. Should you miss this orientation, you will have to arrange for another session at the convenience of the Teaching Lab Specialist.**

This course will adhere to the School of Art and Art History's Health and Safety Policy, which will be reviewed in class. All students are required to sign and submit to the office the SAAH Health and Safety Student Signature page.

## **Respiratory Protection**

University of Florida Environmental Health and Safety (EH&S) has determined that the use of respiratory protection is not required for projects and activities typically performed in the School of Art + Art History. It is against the School of Art + Art History policy for any instructor to require students to wear respiratory protection however, you may recommend it, and you may voluntarily choose to wear respiratory protection: either an N95 filtering face piece, commonly known as a dust mask, or a tight fitting half or full-face respirator. Any user who chooses to wear such respiratory protection is therefore said to be a voluntary user.

Please read the entire policy in the SA+AH Health and Safety Handbook (see link above).

## **Specific Area information for Ceramics:**

### **Area Rules**

All users of the studio classrooms are expected to follow studio area rules at all times. If you have any questions, ask your instructor.

- Follow all SA+AH Health and Safety handbook guidelines
- Follow the SA+AH Satellite Waste Management Chart in the classroom and other health & safety guidelines posted for your media.
- In case of emergency, call campus police at 392-1111
- File an incident report (forms may be found in the SAAH H&S handbook, the SAAH faculty handbook and in the main office.) Turn completed forms into the SAAH Director of Operations within 48 hours of the event.
- Alcohol is forbidden in studios
- No eating or drinking in the glaze or mixing areas
- Familiarize yourself with the closest eyewash unit
- Shoes must be worn at all times
- It is recommended that Protective equipment be worn at all times: safety glasses when grinding, chipping shelves, etc., protective lenses for kiln viewing, gloves for hot objects, heat-resistant aprons for raku, ear protection for grinding and sawing, rubber gloves for mixing hazardous materials
- Do not block aisles, halls, or doors
- Do not bring children or pets into the studios
- Do not store things on the floor
- Clean up spills immediately
- Scoop up dry materials, mop up liquids, do not spilled materials to original source as they are contaminated now
- Carry heavy or large trash to the dumpster
- Place materials containing barium or chrome in the hazardous waste disposal area
- Do not sweep. This puts hazardous materials in the air. Rather scrape up chunks and wet-clean.

- Report any safety issues IMMEDIATELY to your instructor.
- All courses must engage in an end of the semester clean up.
- Follow the **SA+AH CONTAINER POLICY** (see policy)

Any questions about Health and Safety? **ASK FIRST** before doing.

### University Policies:

**Students with disabilities** - I will make every attempt to accommodate students with disabilities. At the same time, anyone requesting classroom accommodation must first register with the Dean of Students Office. The Dean of Students Office will provide you with the necessary documentation, which you must then provide to me when requesting accommodation.

*“Students requesting classroom accommodation must first register with the Dean of Students Office. The Dean of Students Office will provide documentation to the student who must then provide this documentation to the Instructor when requesting accommodation.”*

### University Policies:

The university’s policies regarding academic honesty, the honor code, and student conduct related to the honor code will be strictly enforced. Full information regarding these policies is available at the following links:

- Academic Honesty: <http://www.registrar.ufl.edu/catalog/policies/students.html#honesty>
- Honor Code: <http://www.dso.ufl.edu/sccr/honorcodes/honorcode.php>
- Student Conduct: <http://www.dso.ufl.edu/sccr/honorcodes/conductcode.php>

**Classroom Demeanor:** Students in the School of Art and Art History are permitted to have cell phones turned on in class to receive campus safety warnings. It would be appreciated if your phone is placed on vibrate so that there are no disruptions. Casual use of phones is not allowed in the studio during class.

**Disruptive Behavior:** Faculty, students, administrative, and professional staff members, and other employees (herein referred to as “member(s)” of the university), who intentionally act to impair, interfere with, or obstruct the mission, purposes, order, operations, processes, and functions of the university shall be subject to appropriate disciplinary action by University authorities for misconduct, as set forth in the applicable rules of the Board of Regents and the University and state law governing such actions. A detailed list of disruptive conduct may be found at: <http://www.aa.ufl.edu/aa/Rules/1008.html>

**Note: Be advised that a student can & will be dismissed from class if he/she engages in disruptive behavior.**

**University Policy for Religious Holidays** The Board of Regents and state law govern university policy regarding observance of religious holidays: Students, upon prior notification of their instructors, shall be excused from class or other scheduled academic activity to observe a religious holy day of their faith. Students shall be permitted a reasonable amount of time to make up the material or activities covered in their absence. Students shall not be penalized due to absence from class or other scheduled academic activity because of religious observances. Further, a student who is to be excused from class for a religious holy day is not required to provide a second party certification of the reasons for the absence.

**University Counseling Services/ Counseling Center:** 301 Peabody Hall, Phone: 352-392-1575, Web: [www.counsel.ufl.edu](http://www.counsel.ufl.edu) The Center provides counseling and consultation services to currently enrolled undergraduate and graduate students and their spouses/partners. This is a very helpful resource and it is recommended that if you are having difficulties with the class that are not related to course materials consider checking these services out.

**Critical Dates on the university calendar may be viewed at –**  
<http://www.reg.ufl.edu/dates-critical.html>