

## Syllabus

---

**MUT 1001**  
**Introduction to Music Theory Rudiments**

Classes: M/W/F Period 2 (08:30a) (MUB 144)

Instructor: Diogo Carvalho

Email: dcarvalho@ufl.edu

Office: MUB 334/336

Office Hours:

R Period 3 (9:35a), and by appointment

---

### Course Description

---

The study of notation, scales, intervals, triads, aural skills, and keyboard skills.

Beyond acquiring skills and knowledge, students will experience different processes of learning and practicing in order to be better prepared for their future music theory courses and professional careers. Students will also be encouraged to relate content to their personal musical experiences and to work in a cooperative atmosphere.

### Required Textbooks

---

Ottman, Robert W., and Nancy Rogers. *Music for Sight Singing*. 9th ed. Upper Saddle River, NJ: Pearson, 2014.

Publisher link [here](#). Other example [here](#).

White, Gary. *Music First!* 6th ed. New York, NY: McGrawHill, 2011.

Publisher link [here](#). Other example [here](#).

### Other Required Materials

---

- Staff Paper      - Pencil (not pen)

### Suggested Materials

---

Online Learning Center for *Music First!* – click [here](#).

### Course Content

---

Notation, scales, intervals, key signatures, pulse, rhythm, meter, triads, inversions, figured bass, harmonic analysis, seventh chords, sight singing, aural skills, and keyboard skills.

## Course Objectives

---

Fulfill the prerequisites for upper level music theory courses.

Use musical notation to create and express musical ideas.

Have the skills to sight sing simple musical materials.

Experiment with different methods for developing musical skills and knowledge.

Understand the rudiments of music theory, as described in the Course Content.

## Course Expectations

---

### *The students should:*

Read the Syllabus and all announcements and assignments thoroughly.

Reserve a reasonable amount of time for homework (practicing, reading, listening, etc.) according to the demands of the course. Normally students need 4 to 6 hours a week for this class.

Maintain a professional, respectful attitude towards other students and your instructor.

Actively engage in every class, singing (alone or in-group), asking questions, and paying attention to the instructor and to other colleagues' activities.

Follow their progress on Canvas. Access [elearning.ufl.edu](http://elearning.ufl.edu) for more information.

Notify your instructor in case of any difficulty with the course—the instructor is here to help you!

### *The instructor should:*

Maintain a professional, respectful attitude towards students.

Carefully listen to students' questions and demands, and be prepared to help them to learn.

Inspire students to enjoy all the activities of the course, and ultimately, music itself!

Provide feedback regarding student's progress.

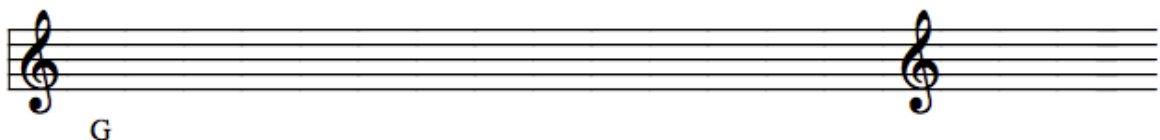
## Evaluation information

---

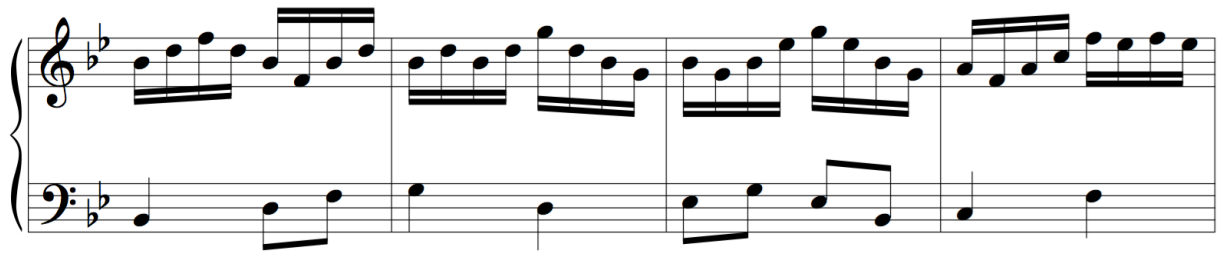
### *Students*

1. Written exams – Please see below two examples of questions from a written exam:

Write the following major scales placing sharps and flats on notes as needed. Show the key signature for the scale in the space to the right.



Find and notate the key, then analyze the arpeggiated harmonies. There is one chord per measure.

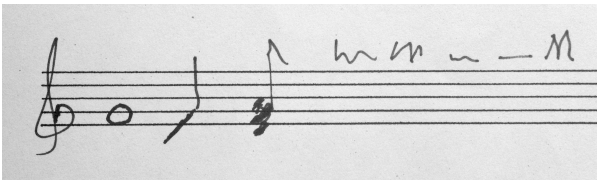


Key:

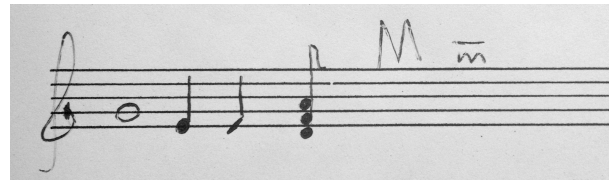
2. Dictation exams – Students should be able to aurally understand and clearly notate musical ideas.
3. Sight singing exams – Students will be evaluated considering intonation, solfege, rhythm, and musicianship. There will be point deductions for pauses.
4. Assignments/homework – At least once a week. May consist of exercises from the book, writing a melody, be prepared to sing a melody, or any other activity relevant for the course.
5. Quizzes – At least once a week, quizzes will cover the ongoing and previous content of the class.
6. Class participation – Students are expected to be active and collaborative during classes.
7. Attendance – Please see information in the grading section, below.

N.B.: Communication is not only writing/saying something; it is also what the reader/listener UNDERSTANDS from what has been written/said! With that in mind, students must provide precise, clearly notated/sang/said answers.

*Ex. 1: Not expected notation.*



*Ex. 2: Expected notation.*



*Instructor*

1. Two instructor/course evaluations along the semester. Students may keep anonymity.
2. Students are welcome to inform the instructor, by email or during office hours, of any suggestions, complaints, and critiques.

3. Students are expected to provide feedback on the quality of instruction in this course by completing online evaluations at <https://evaluations.ufl.edu>. Evaluations are typically open during the last two or three weeks of the semester, but students will be given specific times when they are open. Summary results of these assessments are available to students at <https://evaluations.ufl.edu/results/>.

## Grading

---

1. Written exams = 25% (Mid-Term = 10% / Final = 15%)
2. Dictation exams (3) = 15%
3. Sight singing exams (3) = 15%
4. Assignments/homework = 15%
5. Quizzes = 10%
6. Class participation = 10%
7. Attendance = 10%

Each class missed without a documented reason will deduct 20% of the total attendance grade (2% of the final grade). If the attendance grade reaches 0 the student automatically receives an E grade (failure).

*\* More about attendance and other details:*

- A documented reason for missing a class might be: medical report, concerts or special events, and death in the family.
- A documented reason for missing a class might NOT BE: broken alarms, tiredness, alligator in the way, or traffic.
- Students must inform (via email) the instructor about an absence at least 24 hours before the beginning of class.
- Special cases should be informed to the instructor, who might consider other reasons for excusing absences, following the norms of the University of Florida.
- No late work will be accepted unless one reason, from the ones presented above, is given.
- Tardiness is not allowed. The class begins exactly at the allotted time.
- Attendance will be verified in the beginning of every class.
- Students are responsible for learning the content of a missed class, and might (or should!) use office hours to prevent staying behind.

*\* More information about attendance [here](#).*

## Grading Scale

---

Grade	Percent	Grade Points
A	93.4-100	4.00
A-	90.0-93.3	3.67
B+	86.7-89.9	3.33
B	83.4-86.6	3.00
B-	80.0-83.3	2.67
C+	76.7-79.9	2.33
C	73.4-76.6	2.00
C-	70.0-73.3	1.67
D+	66.7-69.9	1.33
D	63.4-66.6	1.00
D-	60.0-63.3	0.67
E	0-59.9	0.00

\* More information on grades [here](#).

## Course Schedule

---

This schedule may be modified at any moment by the instructor, who will inform students within a reasonable time span.

Unless informed differently by the instructor, on Mondays and Wednesdays students must bring *Music First!* (White); on Fridays students must bring *Music for Sight Singing* (Rogers).

**Week 1 (08/22)**

- Syllabus reading - Presentations  
\* *White, chap. 1 – Elements of Music: Pitch*  
- Introduction to Solfege: Movable-Do

**Week 2 (08/29)**

\* *White, chap. 2 – Elements of Music: Rhythm*

**Week 3 (09/05) – no class on Mon**

\* *White, chap. 3 – Simple Meter*

**Week 4 (09/12)**

\* *White, chap. 4 – Compound Meter*

**Week 5 (09/19)**

- **Dictation exam 1 – Mon**  
\* *White, chap. 5 – Sharps, Flats, and Naturals*

**Week 6 (09/26)**

- **Sight singing exam 1 - Fri**  
\* *White, chap. 6 – Major Scales/Major Keys*

<b>Week 7 (10/03)</b>	* <i>White, chap. 6</i>
<b>Week 8 (10/10) – No class on Fri</b>	* <i>White, chap. 7 – Minor Scales/Minor Keys</i>
<b>Week 9 (10/17)</b>	- <b>Instructor/course evaluation 1 – Wed</b> * <i>White, chap. 7</i>
<b>Week 10 (10/24)</b>	- <b>Mid-term exam – Wed</b> * <i>White, chap. 8 – Intervals + appendix 4</i>
<b>Week 11 (10/31)</b>	- <b>Sight singing exam 2 – Mon</b> * <i>White, chap. 8 + appendix 1</i>
<b>Week 12 (11/07) – no class on Fri</b>	* <i>White, chap. 9 – Chords</i>
<b>Week 13 (11/14)</b>	- <b>Dictation exam 2 – Fri</b> * <i>White, chap. 9</i>
<b>Week 14 (11/21) – no class on Wed and Fri</b>	- <b>Sight singing exam 3 – Mon</b>
<b>Week 15 (11/28)</b>	* <i>White, chap. 10 – The Harmonic System</i>
<b>Week 16 (12/05) – no class on Fri (reading days)</b>	- <b>Instructor/course evaluation 2 – Wed</b> * <i>White, chap. 10</i>
<b>Week 17 (12/12)</b>	- <b>Final exam + dictation exam 3 – Fri (10am-12pm)</b>

## Academic Honesty

UF students are bound by The Honor Pledge which states, “We, the members of the University of Florida community, pledge to hold ourselves and our peers to the highest standards of honor and integrity by abiding by the Honor Code. On all work submitted for credit by students at the University of Florida, the following pledge is either required or implied: “On my honor, I have neither given nor received unauthorized aid in doing this assignment.” The Honor Code (<http://www.dso.ufl.edu/sccr/process/student-conduct-honor-code/>) specifies a number of behaviors that are in violation of this code and the possible sanctions. Furthermore, you are obligated to report any condition that facilitates academic misconduct to appropriate personnel. If you have any questions or concerns, please consult with the instructor or TAs in this class.

## Other Resources

---

### *Health and Wellness*

U Matter, We Care: If you or a friend is in distress, please contact [umatter@ufl.edu](mailto:umatter@ufl.edu) or 352 392- 1575 so that a team member can reach out to the student.

Counseling and Wellness Center: <http://www.counseling.ufl.edu/cwc/Default.aspx>, 392-1575; and the University Police Department: 392-1111 or 9-1-1 for emergencies.

Sexual Assault Recovery Services (SARS) Student Health Care Center, 392-1161.

University Police Department, 392-1111 (or 9-1-1 for emergencies).  
<http://www.police.ufl.edu/>

### *Academic Resources*

E-learning technical support, 352-392-4357 (select option 2) or e-mail to Learning-support@ufl.edu. <https://lss.at.ufl.edu/help.shtml>.

Career Resource Center, Reitz Union, 392-1601. Career assistance and counseling.  
<http://www.crc.ufl.edu/>

Library Support, <http://cms.uflib.ufl.edu/ask>. Various ways to receive assistance with respect to using the libraries or finding resources.

Teaching Center, Broward Hall, 392-2010 or 392-6420. General study skills and tutoring.  
<http://teachingcenter.ufl.edu/>

Writing Studio, 302 Tigert Hall, 846-1138. Help brainstorming, formatting, and writing papers.  
<http://writing.ufl.edu/writing-studio/>

Student Complaints Campus:

[https://www.dso.ufl.edu/documents/UF\\_Complaints\\_policy.pdf](https://www.dso.ufl.edu/documents/UF_Complaints_policy.pdf)

On-Line Students Complaints: <http://www.distance.ufl.edu/student-complaint-process>

Students with disabilities requesting accommodations should first register with the Disability Resource Center (352-392-8565, [www.dso.ufl.edu/drc/](http://www.dso.ufl.edu/drc/)) by providing appropriate documentation. Once registered, students will receive an accommodation letter which must be presented to the instructor when requesting accommodation. Students with disabilities should follow this procedure as early as possible in the semester.