

ART 4312c / ART 4402c

Advanced Drawing / Advanced Printmaking

School of Art + Art History - University of Florida

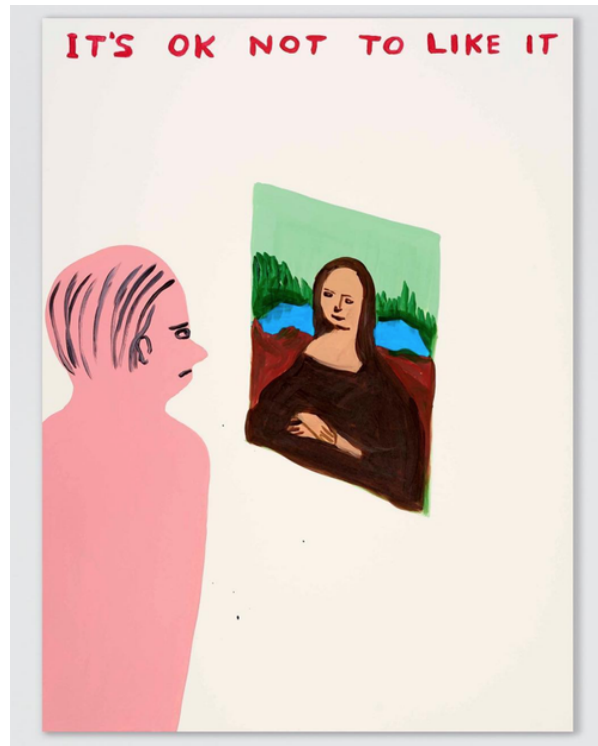


Image Credit: David Shrigley

Fall 2023 / M/W 8:30 am - 11:30 pm / Seminar

F 8:30 am - 2:45pm / Independent Studio Research

Location / FAD 117 & FAC 318 / 3 credits

Instructor: Adrian Gonzalez / Assistant Professor / [www.adriangonzalezstudio.com](http://www.adriangonzalezstudio.com)

[gonzalezadrian@ufl.edu](mailto:gonzalezadrian@ufl.edu) / Fine Arts Building C / Room 317A

Office Hours: M 11:45 pm - 12:45 pm / please make an appointment. An extra hour a week is reserved for appointments to help find a better time that you can meet.

Office Hours may be used for questions about class, assignments, or general conversation, processing, and reflection. No agenda or question is required to come to Office Hours. I am typically on campus on Mondays and Wednesdays. It will usually be best to meet with me via Zoom.

## Course Description

---

Advanced Drawing and Printmaking introduces studio art seniors with interdisciplinary dialogues and practices to support their own independence and self awareness. Through conversations, exercises, workshops, arguments and counterarguments this course will foster a creative environment surrounding art practices. Seniors will investigate their own practice and influences, in and out of the studio, to help guide the most effective means, forms, and language to critically engage with their evolving role in contemporary culture.

## Course Objectives

---

- 1) Identify and evolve a studio practice.
- 2) Survey, assess, and analyze the landscape of contemporary art practice and related fields.
- 3) Write about and articulate a studio practice with sophistication and clarity.
- 4) Establish the parameters of your individual practice, motivations, and values that define you as an artist.
- 5) Build and employ resources that you can return and add to throughout the rest of the undergraduate program and your life as an artist.
- 6) Practice informed criticality with your peers
- 7) Hone an agency in the context of which you are making art

## Course Structure

---

This seminar meets three times a week. Mondays and Wednesdays are led by the instructor. During this time we will discuss, think, and speak about your relationship between contemporary, historical and theoretical issues found in and out of academia, as they relate to building a critical dialogue and professional practice. Weekly meetings include guest lectures, readings, writing assignments, discussions, presentations, peer to peer interactions, critiques, and studio visits. Fridays are reserved for studio making and research.

## Senior Studios

---

Your studio acts as a conduit between the forming of artistic intention and the work that is made; it is the when and the where of an artist's immersion in the process of research and making. Being in your studio requires the very highest level of focus and productivity. The deeper the investigation of ideas and materials, the more productive the artistic outcome. Students are expected to be making new works to present and discuss throughout the semester. Remember making is research and coincides with the research in the seminar portion of the course, they work simultaneously for success in the classroom.

## Seminar Topics and Projects

---

The course is based around topics that will unfold conversation and engagement with the contemporary world and your practice.

The Studio  
Artifacts, & Logistics  
Artist Agency  
Professional Practices and Engagement

## Studio Visits

---

The foundation of the BFA experience is the production of artwork in the context of dialogue and critique within a community of peers. Studio visits generate a dynamic forum for multiple voices to merge into conversation. They develop a student's ability to assess, contextualize, and discuss artworks at a professional level. It provides a space for debate, questioning, agreement, disagreement, inspiration, and discovery. During studio visit sessions, students participate in mixed groups, engaging in rigorous peer review of in progress and finished work.

## Peer Partner

---

Each student will be paired with a peer partner: another student in the class who will act as a sounding board, proofreader, and informal consultant. Peer partnerships are mutually beneficial relationships that enhance learning and growth through ongoing dialogue. Peer partners can rely on each other for feedback on written assignments and materials as well as studio work and course problem-solving.

## Studio Journal

---

A Studio Journal will be an important part of this course. You will keep a log of what you have made, your reflections, struggles, research. It will be the archive of all your ideas. You will submit your journals throughout the semester and have open discussions with the class. Dates are found on Canvas.

## Daily Work and Assignments

---

If you do a little bit every day, you can't help but accomplish a lot. Part of making the transition to working outside the academy, is to learn how to pace yourself, make time for yourself, and get your work done without drama. Good work habits are the domain of Professional Practice.

Always include your name and the assignment when naming, saving, and uploading your files.

File Name Example: gonzalez\_adrian\_assignment\_2023.pdf

\*\*\*Assignment details can be found on Canvas

## Required Texts, Materials, Software, or Equipment

---

Required text will be provided on Canvas. Students are responsible for obtaining materials for independent projects and presentations.

## Communication

---

Students are advised to use ufl.edu email for all UF course correspondence and to check and respond regularly. It is best not to rely on canvas email, but email the instructor directly via Outlook. I usually respond within 24 hours: emails sent after 6pm Friday or over the weekend may not receive a response until Monday. For emergencies call UF Police 352.392.1111 or 911.

\* Canvas is where to find announcements, weekly calendar/due dates, assignment descriptions, course materials/readings, grading, and office hours/class, zoom links.

## Visiting Artists Calendar / Fall 2023

---

You are expected to attend visiting artist talks and take notes. You are required to attend 2 lectures and submit a one page reflection and research. We will discuss Artists in the class following the lecture. Dates on submissions will be found on canvas.

Casey Whittier

Tuesday, September 12th / 6:15pm / In-Person / Little Hall

Ana María Gómez López

Tuesday, September 19th / 6:15pm / Virtual Talk: Zoom

Domingo Castillo

Tuesday, October 3rd / 6:15pm / In-Person / Little Hall

Troy Montes Michie,

Tuesday, October 17th / 6:15pm / Virtual Talk: Zoom

## Course Grading Criteria

---

Your grade for the course is based on a holistic assessment of your engagement with the class. Grades for this course will be based on your effort and conversations in class and in the studio, reading reflections and discussions, and citizenship. You will be graded both on individual performance and in relation to your peers. You will receive a midterm and final grade. Grading will favor students who pace themselves, and don't wait until the last minute. In short, if you participate fully, are engaged in class and attend all sessions, you will receive an excellent grade. Below is a sample of how grading is calculated, but these categories are not fixed.

10%: Attendance and citizenship. Citizenship includes participation, effort, community engagement. For a full grade, participation is essential. Participation, as part of your overall citizenship, is a graded component of this course.

10% Studio Journals

40%: assignments and presentations

40%: Studio Work 2- 5 new finished works for this class, that are not assignments from another class / studio visits and group conversations

### Grade Values

A, A-: Superior work and effort. This grade level is for those who demonstrate and maintain strong creative concepts, intellectual curiosity, focused work ethic, and courage to push beyond safe limits. They work consistently and are engaged in outside research inherent to their studio practice facilitated by self-generated questions and critical thinking. They actively participate in critiques and seminars, and show a high level of independence, professionalism, and motivation facilitating the studio community and their education.

B+, B, B-: Very good work and effort. This grade implies above average work, participation/citizenship and demonstrates an effort beyond expectations to discover in the process of developing a solid studio practice. The B student works hard but struggles some with productivity and analysis of studio work in context; or has good conceptual goals but does not put forth substantial skill/effort to communicate them effectively. The B range student may be doing minimal outside research to develop ideas but makes use of the faculty/peer suggestions and dialogue.

C+, C: Average work and effort. This grade indicates good attendance, completion of ideas, and some extra work. Adequate time spent in the studio. The C student struggles with resolving projects in a coherent manner, or may struggle with the development of a consistent and rigorous studio practice. Their participation and initiative in critique settings and seminar is minimal, and they often fail to initiate peer and faculty feedback.

Any grade below a C is not a passing grade in the Graduate School of Art. Performance is average and requirements are not met. The student will be issued a deficiency notice or placed on probation if a grade of C or lower is issued.

### Grading Scale

A 95-100, A- 94-90, B+ 87-89, B 86-84, B- 80-83, C+ 77-79, C 74-76, C- 70-73, D+ 67-69, D 64-66, D- 60-63, E 0-59

UF final grades and grading policies info:

<https://catalog.ufl.edu/ugrad/current/regulations/info/grades.aspx>

## Late Work Policy

---

Work submitted any time after the due date will be graded down one letter grade per class meeting. An assignment more than 5 days late will receive an E. No work resubmission will be accepted. Policy for make-up work assignments: If due to circumstances beyond your control: severe medical emergencies, family matters which demand your not attending class etc. I will work with you to arrive at an equitable solution for make-up and completion of the course assignments.

## Calendar Outline

---

**Disclaimer: The instructor reserves the right to make modifications to this calendar throughout the semester**

An overall calendar for the course is available on Canvas. You are responsible for knowing the schedule and being prepared for activities that are planned for each class. Reminder emails will not be sent unless there is a change in the schedule.

### Important Dates:

September 4th - Labor Day

November 10th - Veterans Day Observed

November 22nd - 25th - Thanksgiving

December 7th and 8th - reading days

	Monday	Wednesday	Friday
Week 1		Introduction to course and facilities	Independent Studio
Week 2	Student presentations Artist Agency / The Studio / Artifacts	Individual meetings w/ Adrian to discuss seminar topics  Catalog due	Independent Studio
Week 3	Labor day no class	Reading Discussion 1 P/D/P resources Studio time	Writing as practice Workshop
Week 4	Exquisite Corpse Artist Statement workshop	Studio visits w Adrian Studio work time	Independent Studio
Week 5	Exhibition discussion and planning  Reading Discussion 2	Woodshop / practical matters for exhibition	Independent Studio
Week 6	Visiting artist /self promoting	Responding in the form of art	Independent Studio

Week 7	Visiting Artists / Studio visits / Fulbright	Exhibition Catalog	Independent Studio
Week 8	Reading Discussion Studio time	Midterm	Independent Studio
Week 9	Professional practices	Studio visits w Adrian Studio work time	Independent Studio
Week 10	All materials due for exhibition catalog  Reading Discussion 3	Group catalog Risograph	Independent Studio
Week 11	Portfolios and Websites	Professional Practices: Writing for exhibition proposals / cover letters / CVs and resumes	Independent Studio
Week 12	Seminar Presentation 1	Seminar Presentation 2	No Class
Week 13	Seminar Presentation 3	Seminar Presentation 4	Independent Studio
Week 14	Seminar Presentation 5	No Class	No Class
Week 15	Studio visits w Adrian Studio work time	Exhibition Prep	Independent Studio
Week 16	Final Critique	Final Critique	

### Attendance, Excused Absences and Emergencies

.....  
 Class attendance will be taken at the beginning of class. Lateness of more than 15 minutes or early departure is considered an absence (and habitual lateness of under 20 minutes will also affect your participation grade as every three times you are late counts as one absence). Participation including attendance, is 15% of your final grade, and will be reduced according to the structure below:

- 85-90% attendance = "Participation" Grade can be no higher than a "B."
- 75-85% attendance = "Participation" Grade can be no higher than a "C."
- 70% or less attendance will result in failure of the course.

For EXCUSED absences due to emergency, illness, court appearance, death in the family, or in order to observe a special religious holiday from affecting your attendance by emailing documentation of your excused absence (such as a doctor's note, or note from family) to the instructor. Regardless if an absence is excused or unexcused, you MUST be in dialogue with your instructor or a peer to keep pace with course content, and arrange for alternate participation with any team or collaborative projects. Excused absences are updated twice a semester, along with your Participation Grade.

Please see University of Florida Attendance Policies and criteria for excused absences at: <https://catalog.ufl.edu/ugrad/current/regulations/info/attendance>.

At the University of Florida, students and faculty work together to allow students the opportunity to observe the holy days of their faith. A student should inform the faculty member of the religious observances of their faith that will conflict with class attendance, with tests or examinations, or with other class activities prior to the class or occurrence of that test or activity. The faculty member is then obligated to accommodate that particular student's religious observances. Because students represent a myriad of cultures and many faiths, the University of Florida is not able to assure that scheduled academic activities do not conflict with the holy days of all religious groups. Accordingly, individual students should make their need for an excused absence known in advance of the scheduled activities.

Listed below are dates of some of the major religious holidays or obligations in the Fall 2022/Spring 2023 semester that may pose potential conflicts for observant students.

The Jewish holidays that may pose potential scheduling conflicts begin at sundown on the first day listed and end at nightfall of the last day shown:

September 25-27 Rosh Hashanah  
October 4- 5 Yom Kippur  
October 9 -11 Sukkot Opening Days  
October 16-17 Shemini Atzeret  
October 17-18 Simchat Torah  
April 5-7 Passover Opening Days  
April 10-13 Passover Closing Days  
May 25-27 Shavuot

Additionally, the Sabbath/Shabbat is celebrated each Friday at sundown though Saturday at nightfall.

Baha'i students may require observance on the following days:

October 26-27 Twin Holy Days  
May 24 Declaration of the Bab

The dates this fall that may present a conflict for Hindu students are:

October 5 Dussehra  
October 24-28 Diwali (also celebrated by Jains and Sikhs)

Muslim student may require observance on the following days:

March 22-April 20 (approximately) Ramadan  
April 21-22 Eid al-Fitr



## Course Evaluations

---

Students are expected to provide professional and respectful feedback on the quality of instruction in this course by completing course evaluations online via GatorEvals. Guidance on how to give feedback in a professional and respectful manner is available at <https://gatorevals.aa.ufl.edu/students/>. Students will be notified when the evaluation period opens, typically during the last two or three weeks of the semester, but students will be given specific times when they are open. and can complete evaluations through the email they receive from GatorEvals, in their Canvas course menu under GatorEvals, or via <https://ufl.bluera.com/ufl/>. Summaries of course evaluation results are available to students at <https://gatorevals.aa.ufl.edu/public-results/>.

## Disability Resource Center

---

Having a disability is not a barrier to making phenomenal art: but we do need to know what you are negotiating to properly support your process. If you have any limitations or documented learning disabilities, please let us know immediately. This includes language limitations, physical illness, limitations or disabilities, including invisible disabilities such as chronic disease, learning disabilities, head injuries or diagnosed attention deficit disorders—we want to help make this class a positive experience for you from the beginning. Students requesting accommodations must first register with the Dean of Students Office, Disability Resource Center (352) 392-8565, [www.dso.ufl.edu/drc/](http://www.dso.ufl.edu/drc/) The student will receive documentation to present to the professor. Please upload your DRC memo to the course Canvas as soon as possible.

## In-Class Recording

---

Students are allowed to record video or audio of class lectures. However, the purposes for which these recordings may be used are strictly controlled. The only allowable purposes are (1) for personal educational use, (2) in connection with a complaint to the university, or (3) as evidence in, or in preparation for, a criminal or civil proceeding. All other purposes are prohibited. Specifically, students may not publish recorded lectures without the written consent of the instructor.

## UF Policies

---

### UF Philosophy

UF encourages the intellectual and personal growth of its students as scholars and citizens. As an educational institution, the University recognizes that the transmission of knowledge, the pursuit of truth, and the development of individuals require the free exchange of ideas, self-expression, and the challenging of beliefs and customs. In order to maintain an environment where these goals can be achieved safely and equitably, the University promotes civility, respect and integrity among all members of the community. As stated in the Standard of Ethical Conduct, students are expected to exhibit high standards of behavior and concern for others.

## Academic Honesty Policy

As a result of completing the registration form at UF, every student has signed the following statement: "I understand that the University of Florida expects its students to be honest in all of their academic endeavors and understand that my failure to comply with this commitment may result in disciplinary action up to and including expulsion from the University." The Honor Code (<http://www.dso.ufl.edu/sccr/process/student-conduct-honor-code/>) specifies dishonest behaviors and possible sanctions.

Understand that the University of Florida expects its students to be honest in all of their academic work. Please adhere to this commitment to academic honesty and understand that failure to comply with this commitment may result in disciplinary action, up to, and including, expulsion from the University.

As artists, we might work in a style commonly known as "appropriation," but it is common courtesy to cite your sources, even when working in a non-written form. Include the names and artwork titles of any work you cite in your projects.

### Disruptive Behavior

Any member of the UF community who acts intentionally to impair, interfere with, or obstruct the mission, purposes, order, operations, processes, and functions of the University shall be subject to appropriate disciplinary action by University authorities for misconduct, as set forth in the applicable rules of the Board of Regents and the University and state law governing such actions. Be advised that you will be dismissed from class if you engage in disruptive behavior.

### Health and Safety Guidelines

The School of Art + Art History Health and Safety Policy handbook provides policy and training for health and safety. Students must follow handbook policies, receive proper training, and sign the signature page, no later than the third class meeting. Please make yourself familiar with the SA+AH Health and Safety Program at:

<https://arts.ufl.edu/site/assets/files/37319/saahhealthandsafetyhandbook.pdf>

### Campus Resources:

.....  

#### U Matter, We Care:

If you or someone you know is in distress, please contact [umatter@ufl.edu](mailto:umatter@ufl.edu), 352-392-1575, or visit U Matter, We Care website to refer or report a concern and a team member will reach out to the student in distress.

**Counseling and Wellness Center:** Visit the Counseling and Wellness Center website or call 352-392-1575 for information on crisis services as well as non-crisis services.

#### Student Health Care Center:

Call 352-392-1161 for 24/7 information to help you find the care you need, or visit the Student Health Care Center website.

University Police Department:  
Visit UF Police Department website or  
call 352-392-1111 (or 9-1-1 for emergencies).

UF Health Shands Emergency Room / Trauma Center:  
For immediate medical care call 352-733-0111 or go to the emergency room at 1515 SW  
Archer Road, Gainesville, FL 32608; Visit the UF Health Emergency Room and Trauma Center  
website.

GatorWell Health Promotion Services:  
For prevention services focused on optimal wellbeing, including Wellness Coaching for  
Academic Success, visit the GatorWell website or call 352-273-4450.

E-learning technical support:  
Contact the UF Computing Help Desk at 352-392-4357 or via e-mail at [helpdesk@ufl.edu](mailto:helpdesk@ufl.edu).

Career Connections Center:  
Reitz Union Suite 1300, 352-392-1601. Career assistance and counseling services.

Library Support:  
Various ways to receive assistance with respect to using the libraries or finding resources.

Teaching Center: Broward Hall, 352-392-2010 or to make an appointment 352-392-6420.  
General study skills and tutoring.

Writing Studio:  
2215 Turlington Hall, 352-846 1138. Help brainstorming, formatting, and writing papers.

Student Complaints On-Campus:  
Visit the Student Honor Code and Student Conduct Code webpage for more information.

On-Line Students Complaints:  
View the Distance Learning Student Complaint Process.

**Disclaimer:**

**With Notice, the instructor reserves the right to make modifications to this information throughout the semester.**